

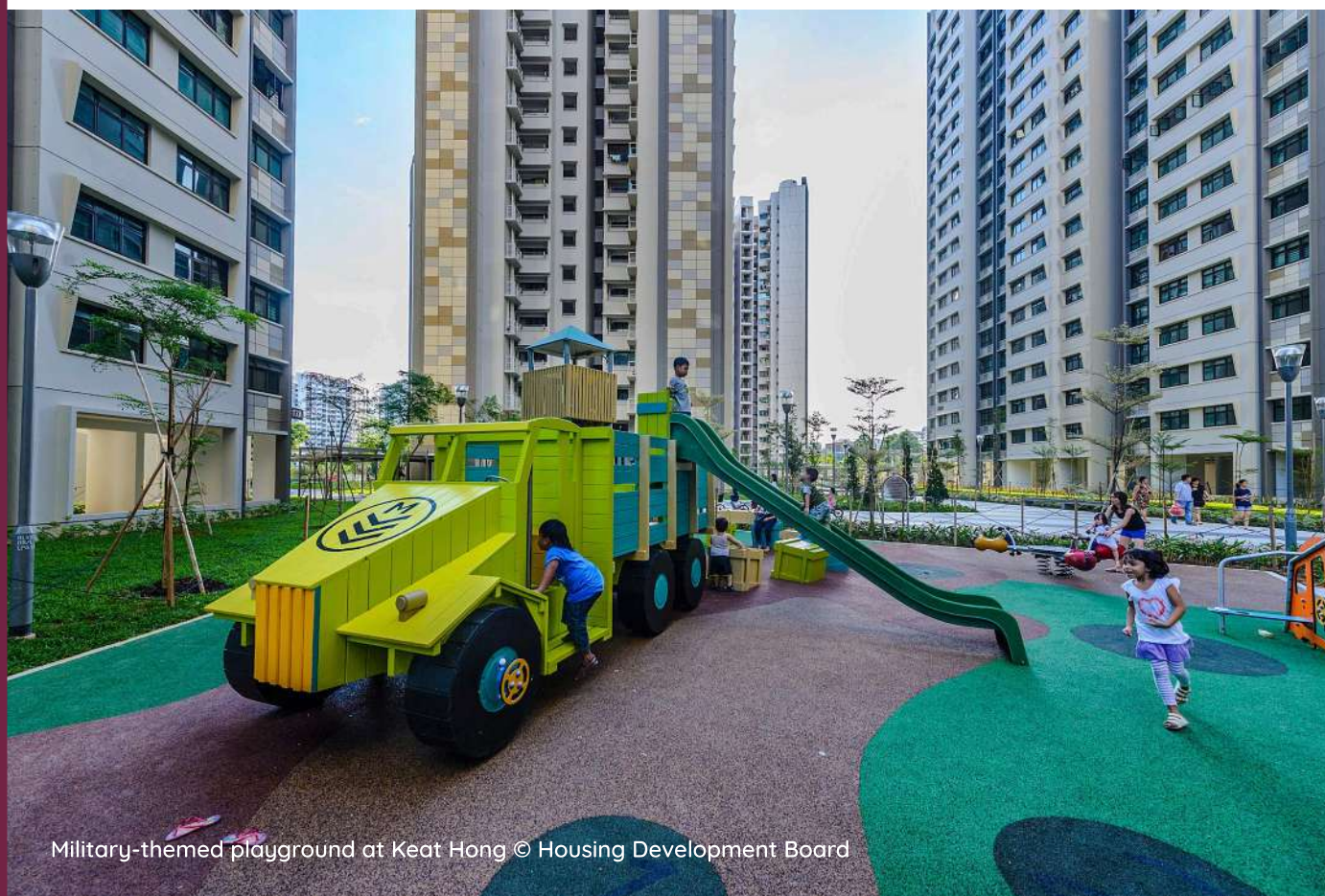
DRAFT MASTER PLAN 2019

WHAT TO LOOK OUT FOR IN CHOA CHU KANG!

The next 10 to 15 years will see Choa Chu Kang grow with more possibilities. New park spaces, amenities and community facilities will be planned at Limbang, Yew Tee and around Choa Chu Kang Central. With the opening of Jurong Region Line in 2026 that links up the wider West region, residents will be able to access job opportunities in upcoming growth clusters such as Jurong Lake District and Jurong Innovation District. For more information on the Draft Master Plan 2019, please visit ura.sg/DMP19.

HOW OUR TOWNS ARE PLANNED

Our towns are planned to be liveable and self-sufficient, with easily accessible shops, health care, schools, community facilities and parks. Commercial nodes, industrial estates and business parks within or nearby the town, also help to provide nearer job opportunities for residents. The detailed planning and implementation of plans for each town is a joint effort of many government agencies.



Military-themed playground at Keat Hong © Housing Development Board

UPGRADING OF LIMBANG PARK AND THE GREEN SPINE ALONG CHOA CHU KANG DRIVE

When completed in 2020, existing areas will be spruced up with new covered linkways and facilities such as an event lawn, open plaza, heritage corner, pickle ball court and pavilions to offer an enhanced park user experience and quality spaces for community events and bonding.

ROAD IMPROVEMENT WORKS AND NEW PARK CONNECTOR ALONG CHOA CHU KANG LINK, STAGMONT RING AND WOODLANDS ROAD

Traffic congestion between Choa Chu Kang Estate and Woodlands Road has improved with the completion of these works in 2018. New bus stops and bus services have also been introduced to serve commuters. A new park connector with an underpass will provide pedestrians with seamless connectivity to Pang Sua Park Connector.

UPGRADED CHOA CHU KANG SPORTS CENTRE & NEW SAFRA CLUBHOUSE IN CHOA CHU KANG TOWN

Residents can look forward to an upgraded sports centre and a new SAFRA Clubhouse in Choa Chu Kang Town Park in 2020 and 2022 respectively. The Choa Chu Kang Sports Centre will offer new water play features and a fully air-conditioned indoor sports hall, while NSmen and their families can enjoy a host of exciting sports and community facilities such as a sheltered swimming pool, sky running track, sports bar, preschool and an indoor playground amidst a lush green setting.

TEMPORARY BUS INTERCHANGE IN CHOA CHU KANG CENTRAL & JURONG REGION LINE (JRL)

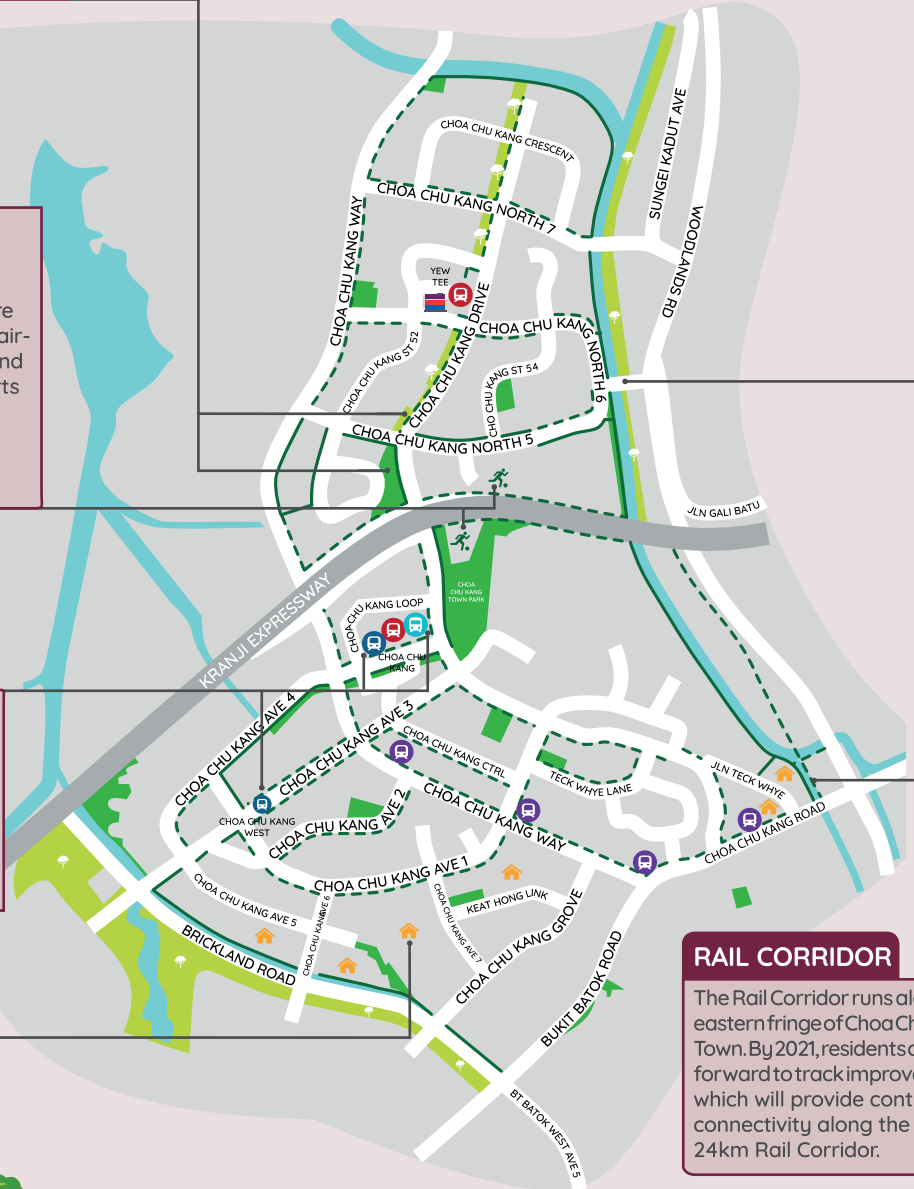
Completed in 2018, the temporary bus interchange offers residents up to 15 bus services while enabling the construction of a new MRT interchange station. When completed in 2026, 2 new JRL stations in Choa Chu Kang town will significantly improve residents' overall public transport accessibility to other parts of the West region.

NEW RESIDENTIAL DEVELOPMENTS IN KEAT HONG

A variety of new housing options are currently available in Keat Hong, with the completion of public and private housing developments such as Keat Hong Pride, Sol Acres and Wandervale over the last 3 years.

RAIL CORRIDOR

The Rail Corridor runs along the eastern fringe of Choa Chu Kang Town. By 2021, residents can look forward to track improvements which will provide continuous connectivity along the entire 24km Rail Corridor.



Note: JRL station names reflected are working names.

LEGEND

EXISTING DEVELOPMENTS

- Park
- Interim Park
- Ⓜ MRT
- Ⓜ LRT
- Ⓜ Bus Interchange
- Waterbody
- Park Connector/Cycling Route

NEW DEVELOPMENTS

- 🏠 Residential
- 🏢 Integrated Development
- 🏃 Sports & Recreation
- Ⓜ MRT
- 🌳 Park
- Park Connector/Cycling Route

